

SAVIN®

SP C222DN

Color Laser Printer

FAST >

SLEEK >

PRODUCTIVE >

CONVENIENT >

COLOR >



A color laser printer series that brings the power of high-volume color to a compact, desktop system.



The speed and quality you need. The value you expect.

The Savin SP C222DN Series brings the power of the award-winning Savin high-volume color technology right to your desktop. These sleek, streamlined color laser printers are customized for small offices, small workgroups and single-user environments. That means they deliver exceptional color and sensational speed for this class, with a feature set that is perfectly aligned with your daily workflow. They are easy to use and maintain. Best of all, these reliable color laser printers are available at a price that makes sense for your budget.



Check printer status at-a-glance to keep workflow moving. The user-friendly control panel features an alert light for error notification and LED indicators that tell you when supplies need to be replenished.

Serious Productivity

Significantly upgrade your productivity with these fast yet affordable color laser printers.

- Print in color without slowing down. Expect identical output speed for color and black & white documents from all three printers — either 21 pages-per-minute (SP C221N and SP C222DN) or 16 pages-per-minute (SP C220N).
- Minimize wait time with a first print speed of just 14 seconds.
- Accelerate job processing and finish important tasks quickly with a powerful 300 MHz controller*.
- Reduce reloading interruptions with a maximum paper capacity of 751 sheets*.
- Cut paper use in half and spend less on supplies with automatic duplexing**.

- Situate these compact printers in a remote office, on a reception desk, in an executive suite, in a kiosk or other areas where space is limited.
- Accent your workplace with stylish details, including a soft curve design and two-tone gray coloring that complements the modern look of today's PCs.

Outstanding Ease of Use

Small offices and workgroups need printers that are easy to operate and maintain. Simplicity is the driving force behind the Savin SP C222DN Series.

- Change supplies quickly with All-in-One Cartridges. Not only do they minimize the number of supplies to store, they have a no-mess design that allows for one-handed replacement.
- Access cartridges easily via the printers' convenient top-loading configuration.

SP C222DN Color Laser Printer

FAST > SLEEK > PRODUCTIVE > CONVENIENT > COLOR >

Automatic Duplexing (Standard on SP C222DN)

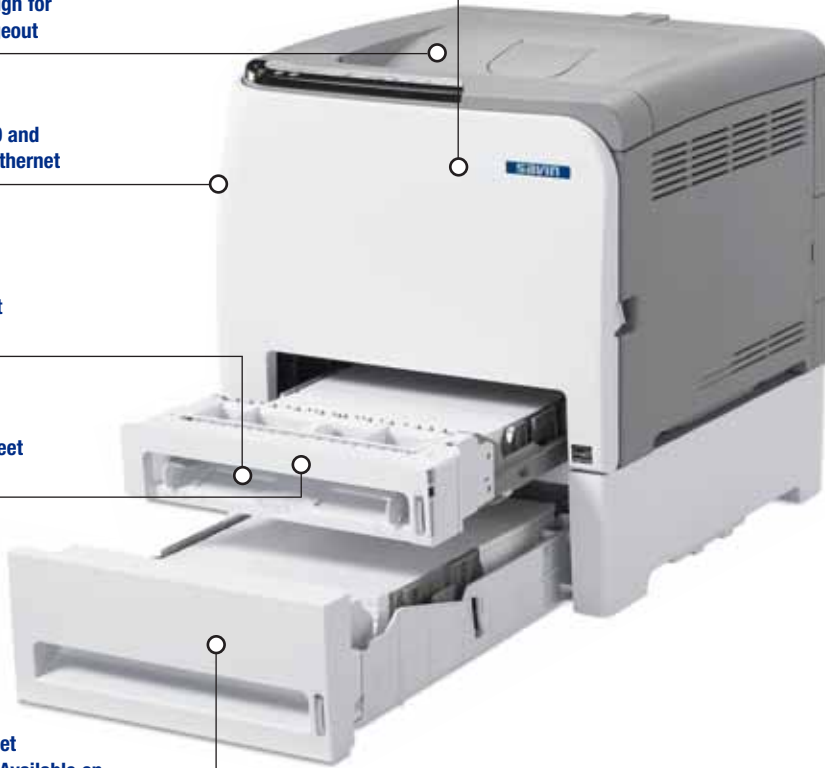
Top-Loading Design for Fast Toner Changeout

Standard USB 2.0 and 10/100Base-TX Ethernet

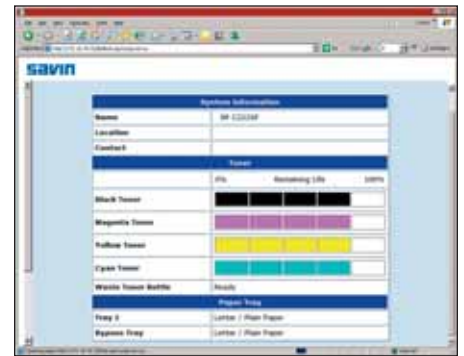
Standard 1-Sheet Bypass Tray

Standard 250-Sheet Paper Tray

Optional 500-Sheet Paper Feed Unit (Available on the SP C221N and SP C222DN)



All-in-One Cartridges and a top-loading design make it easy to replace supplies.



Easily manage these printers over the Web with the Status Image Monitor.

- Manage printers remotely to save time in offices and workgroups. Status Image Monitor software lets you check supply levels and change settings via the Web.
- Print photos instantly without a PC. PictBridge™ support** lets you connect a PictBridge compliant digital still camera directly to the printer.

Enhanced Quality and Reliability

Depend on these cost-effective printers for laser-quality color and consistent, reliable performance.

- Print reports, Web pages, presentations and other documents with crisp text and vibrant color. The Savin SP C222DN

Series offers resolutions up to 2400 x 600 dpi.

- Take a step up from inkjet technology. Get consistent color quality on plain paper and fast output at high resolution, without the risk of smeared ink.
- Print company logos and brand colors confidently thanks to built-in color profiles.
- Minimize the risk of misfeeds with a short, simple paper path. If a misfeed occurs, this design allows you to access all paper from the front of the printer.

*SP C221N and SP C222DN only.

**SP C222DN only.

Your Environmental Partner

Savin continues its long-standing commitment to developing office solutions with environmentally friendly and superior energy- and supply-saving features, without compromising productivity, including:

- Quick Start-Up (QSU) Technology
- Power-Saving Sleep Mode
- Low Noise Levels
- Minimal Ozone Emissions
- Restriction of Hazardous Substances (RoHS) Compliant



FAST > SLEEK > PRODUCTIVE > CONVENIENT > COLOR >

ENGINE SPECIFICATIONS

Configuration Technology	Desktop Laser beam scanning and electro-photographic printing with mono-component toner development, 4-drum tandem method
Resolution	600 x 600 dpi (Speed Mode), 1200 x 600 dpi (Standard Mode), 2400 x 600 dpi (Fine Mode)
Printing Speed	SP C220N: 16 pages-per-minute in B&W and full-color SP C221N/SP C222DN: 21 pages-per-minute in B&W and full-color
First Print Speed	Color: 14 seconds or less B&W: 14 seconds or less
Dimensions (WxDxH)	16.0" x 18.0" x 12.8"
Weight	50.7 lbs. (includes consumables)
Warm-Up Time	51 seconds or less
Power Requirements	120V, 60Hz
Maximum Power Consumption	1,300W or less
Energy Saver Mode	15W or less
Standard Paper Capacity	250-Sheet Paper Tray, 1-Sheet Bypass Tray
Optional Paper Feed Unit	SP C221N/SP C222DN: 500-Sheet Paper Feed Unit
Maximum Paper Capacity	SP C220N: 250 sheets + 1-Sheet Bypass Tray (total of 251 sheets) SP C221N/SP C222DN: 250 sheets + 1-Sheet Bypass Tray + 500-Sheet Paper Feed Unit (total of 751 sheets)
Output Capacity	150 sheets (face down)
Automatic Duplex	Standard on SP C222DN
Paper Sizes	Standard Tray: Letter (8.5" x 11"), EXE (7.25" x 10.5"), B5 (6.9" x 9.8"), Legal (8.5" x 14"), Custom (Width 3.6" – 8.5", Length 5.8" – 14.24") Optional Paper Feed Unit: Letter (8.5" x 11"), A4 (8.3" x 11.7") Bypass Tray: Letter (8.5" x 11"), EXE (7.25" x 10.5"), B5 (6.9" x 9.8"), Legal (8.5" x 14"), Custom (Width 3.6" – 8.5", Length 5.8" – 14.24") Duplex ¹ : Letter (8.5" x 11"), EXE (7.25" x 10.5"), B5 (6.9" x 9.8"), Legal (8.5" x 14")

ENGINE SPECIFICATIONS (Cont.)

Paper Weight	Standard Tray and Bypass Tray: 16 – 40 lb. Bond/83 lb. Index (60 – 160 g/m ²) Optional Paper Feed Unit: 16 – 28 lb. Bond (60 – 105 g/m ²)
Acceptable Paper Types	Standard Tray and Bypass Tray: Plain Paper, Recycled Paper, Envelopes, Glossy Paper, Thick Paper & Labels Optional Paper Feed Unit: Plain Paper, Recycled Paper
Safety Regulations	UL60950, FCC Part 15 Class B device, Energy Star [®] Color Printers – Tier 2

^{*}SP C220N and SP C222DN only.
[†]SP C222DN only.

CONTROLLER SPECIFICATIONS

CPU	SP C220N: 192 MHz SP C221N/SP C222DN: 300 MHz
Printer Languages	SP C220N: DDST SP C221N/SP C222DN: PCL5c/6, PostScript 3 emulation
Fonts	SP C221N/SP C222DN: 80 fonts
Memory	SP C220N: 64 MB RAM standard/maximum SP C221N/SP C222DN: 128 MB RAM standard, 640 MB RAM maximum
Standard Interface	SP C220N: USB 2.0, Ethernet 10/100Base-TX SP C221N: USB 2.0, Ethernet 10/100Base-TX SP C222DN: USB 2.0, Ethernet 10/100Base-TX, USB Host I/F for Camera Direct Printing
Optional Interface [*]	SP C220N/SP C221N/SP C222DN: IEEE 802.11b/g Wireless Bridge SX 2500CG
Network Protocols	SP C220N: TCP/IP SP C221N/SP C222DN: TCP/IP, AppleTalk, IPX/SPX
Operating Systems	Windows 2000/XP/Server 2003/ Vista; Mac OS X v.10.2 – 10.4; Novell Netware v. 4.x or later [†]

CONTROLLER SPECIFICATIONS (Cont.)

Drivers	DDST: Windows 2000/XP/Server 2003; Mac OS X v. 10.2.8 – 10.4, Citrix Server PCL 5c/6: Windows 2000/XP/ Server 2003; Mac OS X v. 10.2 – 10.4, Citrix Server PostScript 3: Windows 2000/XP/ Server 2003; Mac OS X v. 10.2.8 or later, Citrix Server
Software Utilities	Status Image Monitor Smart Organizing Monitor

^{*}Please note the Wireless Bridge Option and 10/100Base-TX cannot operate simultaneously.
[†]Only available with the SP C221N and SP C222DN

CONTROLLER OPTIONS^{*}

Memory Unit Type F 256MB	003310MIU
Memory Unit Type F 512MB	003311MIU

^{*}Additional memory is only available on the SP C221N and SP C222DN.

OPTIONAL ACCESSORIES

Paper Feed Unit [*] Type TK1010	Order# 406019 Paper Size: Letter (8.5" x 11"), A4 (8.3" x 11.7"), Paper Weight: 16 – 28 lb. Bond (60 – 105 g/m ²) Capacity: 500 sheets
--	--

^{*}Paper Feed Unit is only available with the SP C221N and SP C222DN.

CONSUMABLES^{*}

Black All-in-One Cartridge	2,000 pages @ 5% coverage
Yellow All-in-One Cartridge	2,000 pages @ 5% coverage
Magenta All-in-One Cartridge	2,000 pages @ 5% coverage
Cyan All-in-One Cartridge	2,000 pages @ 5% coverage
Waste Toner Bottle	25,000 pages

^{*}The SP C220N, SP C221N and SP C222DN ship with starter All-in-One Cartridges that yield 1,000 pages. All other consumables ship at full yield. All-in-One Cartridge yields based on 5% coverage and 24 pages per job. For maximum performance and yield, we recommend using genuine Savin parts and supplies.

SAVIN SP C222DN Series Color Laser Printer	SAVIN SP C220N	SAVIN SP C221N	SAVIN SP C222DN
Output Speed (LTR)	16-ppm Full-color, 16-ppm Black & white	21-ppm Full-color, 21-ppm Black & white	
Controller Type	Dynamic Data Stream Technology [DDST] (GDI)	PCL	
CPU Speed	192MHz	300MHz	
Std./Max. Memory	64MB/64MB RAM	128MB/640MB RAM	
PDL Support	DDST	PCL 5c, PCL 6, PostScript3 emulation	
Standard Interfaces	USB 2.0, 10/100Base-TX Ethernet		USB 2.0, 10/100Base-TX Ethernet, USB Host I/F for PictBridge
Standard Paper Supply	250-Sheet Standard Tray + 1-Sheet Bypass Tray		
Optional Paper Supply	None	500-Sheet Paper Feed Unit	
Duplexing	Manual		Automatic
PANTONE™ Support [*]	No	Yes	

^{*}Please contact your sales professional for release date.

www.savin.com

Savin Five Dedrick Place, West Caldwell, NJ 07006

SAVIN[®] is a registered trademark of Ricoh Americas Corporation. Windows[®] and Windows[®] 2000/XP/Server 2003/Vista are registered trademarks of Microsoft Corporation. Macintosh[®] is a registered trademark of Apple Computer, Inc. PCL is a registered trademark of Hewlett-Packard Company. PictBridge is a registered trademark of Canon, Inc. All other trademarks are the property of their respective owners. Print speed may be affected by network, application or PC performance. Specifications and external appearances are subject to change without notice. Products are shown with optional features.

♻️ Printed in U.S.A. on recycled paper. S2674



Note: SP C221N does not meet Energy Star compliance.